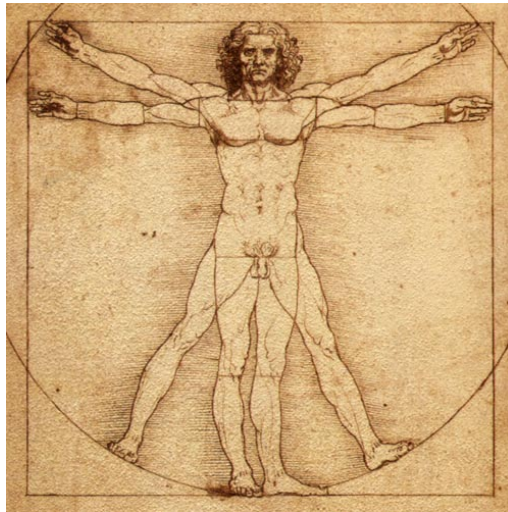


Grade 7 - Visual Arts

Term 4

Life Drawing

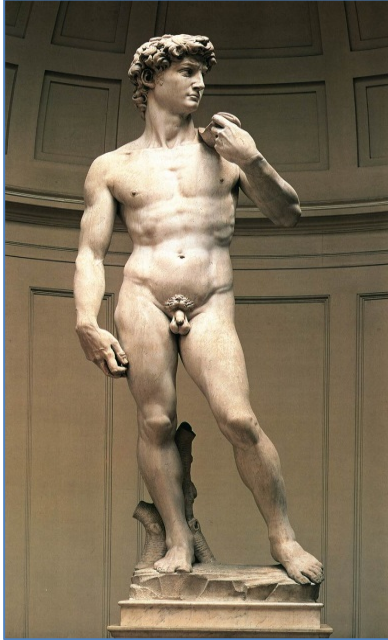


Like still life, the style (genre) of life drawing is very important in the fine arts, and also to several fields of design such as fashion, architecture and furniture design.

During the Classical Greek era, people believed there was an ideal human form or shape that was the highest example of beauty.



During the Renaissance, approximately 2000 years later, artists like Michelangelo and Raphael revived this Classical approach to the search for the perfect human form. This depiction of the human form in art is still admired by the general public.



However, there are many ways to draw the human form. The artist, Picasso, often distorted natural proportions to capture a strong emotion. He drew things not as they looked, but in a way that expressed an idea or a feeling. The purpose of this artistic style was to try and show all the sides of an object or body in one picture.



This has sometimes led to criticism of modern artists, who seem not to know how to draw or paint, whereas nothing could be further from the truth! Picasso's very early work was keenly observed and rendered perfectly, according to the classical traditions.



Picasso had thoroughly investigated and understood the figure before his style changed to something more abstract. Many artists have begun their creative path in exactly the same way, and so shall you.

The human form, its proportions and dynamics are best understood when we observe and draw from life. Pure line drawing can be very expressive and reveal the depth in a shape. The best way to achieve the illusion of three dimensions on paper or canvas, however, is to model the forms tonally from light to dark. The more gradual the shift, the more convincing the result, particularly when drawing muscles or folds of fabric.

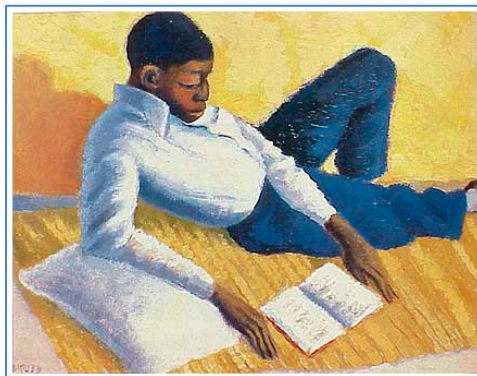
Renaissance artist, Leonardo da Vinci, spent much of his life studying the human body and how it responds in different poses. He then looked at how tone in his art could best represent this.



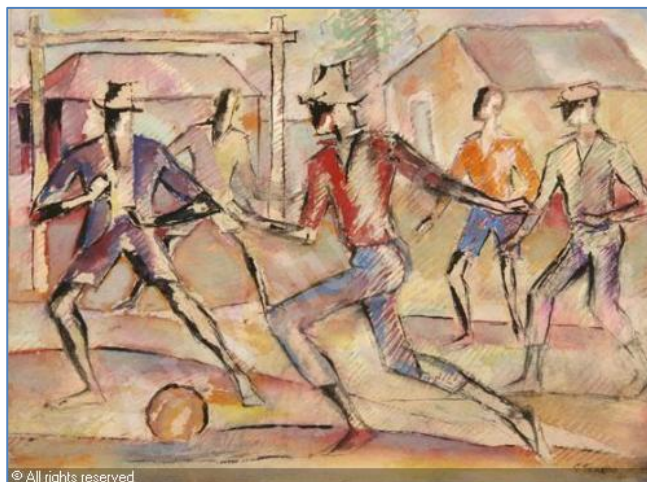
To achieve tonal variety in your work, look at the light falling on the figure and the drapery. Find the light source and note how forms that are not in the light appear darker tonally.



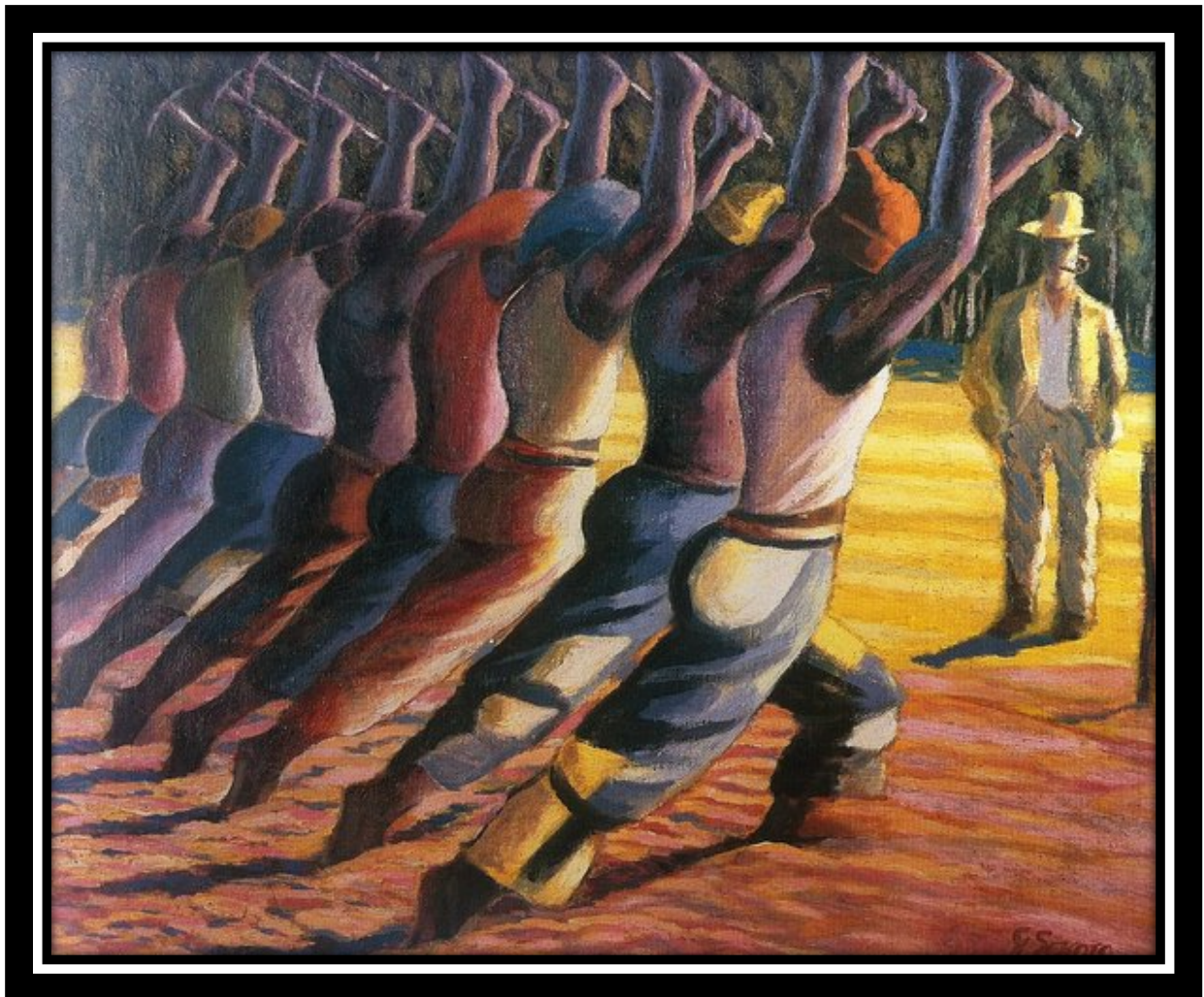
A life drawing is when a model poses so the artist can observe him/her and paint, draw, create a sculpture, or photograph the model. Here is a painting by the South African artist, Gerard Sekoto.



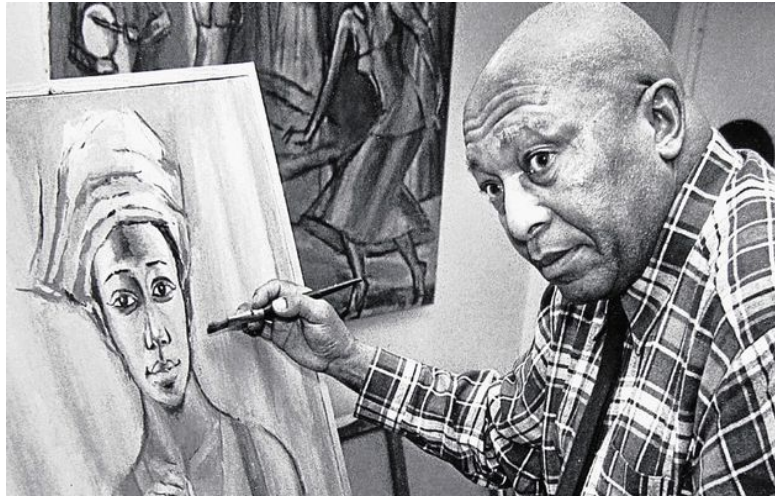
Using a variety of lines, Sekoto was able to capture and describe people in the places he lived.



'The song of the Pick' by Gerard Sekoto
expresses the life of servitude during Apartheid.



The composition is balanced because the figures are equally distributed across the canvas. The man in the background is isolated and attracts our attention.



Gerard Sekoto was born on 9th December 1913 at Botshabelo mission, near Middleburg, Mpumalanga and he died, in Paris, in 1993. He trained to become a teacher at the Diocesan Teachers Training College in Pietersburg and, on graduating, he taught at a local school, Khaiso Secondary, for 4 years.

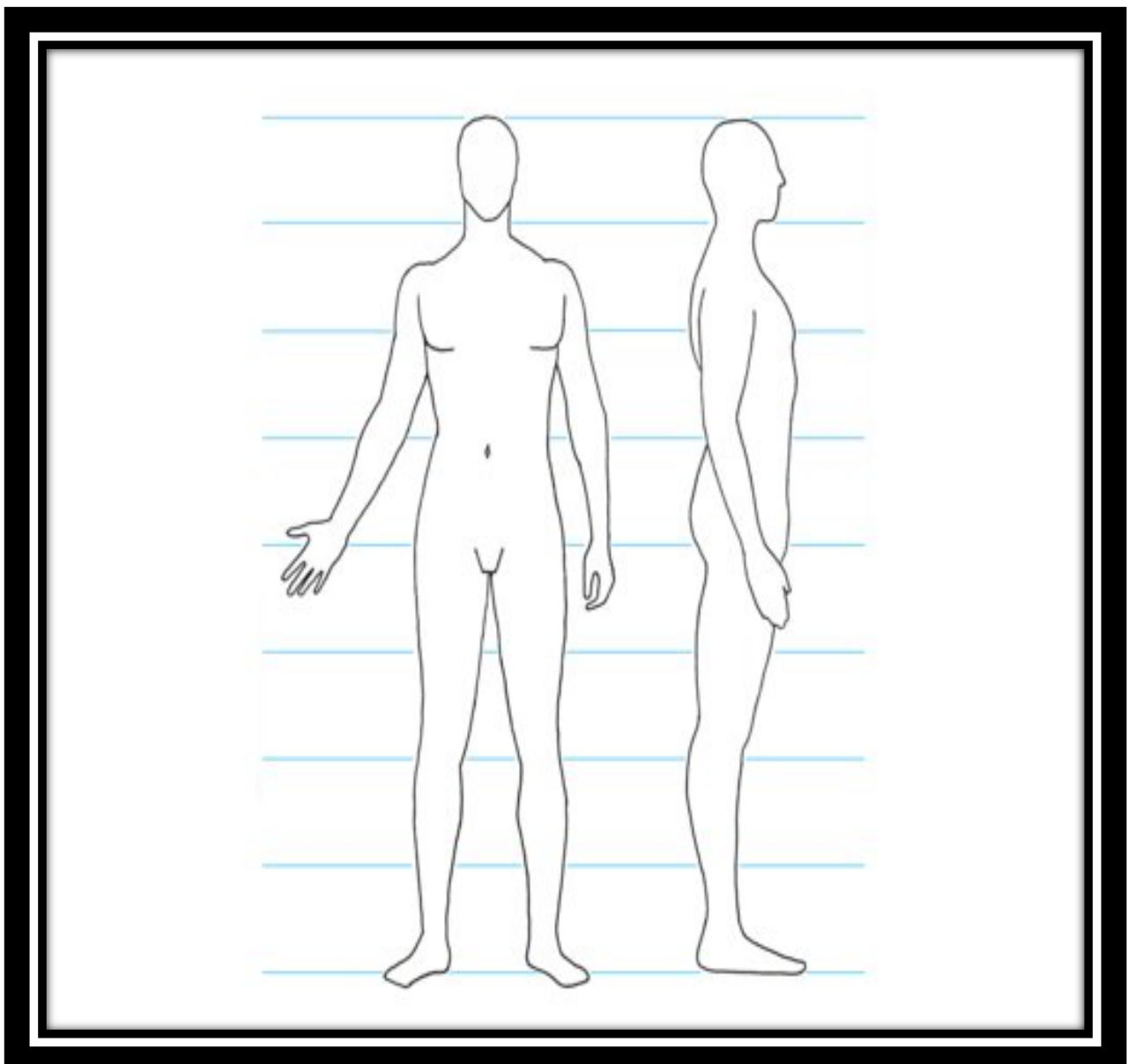
In 1938 at the age of 25 he left for Johannesburg to become an artist. He lived with relatives in Sophiatown, a township outside Johannesburg. Life in Sophiatown provided him with subject matter – he painted urban images of active scenes in the community in bold colours in an **Expressionist style**. He held his first solo exhibition in 1939. In 1940 the Johannesburg Art Gallery purchased one of his pictures and this was to be the first picture painted by a Black artist to enter a museum collection. In 1942 he moved to District Six in Cape Town and in 1945 to Pretoria.

It was an ambition of his to visit Paris - the centre of the art world and in 1947 he left South Africa to live, for the rest of his life, in Paris. The first years in Paris were hard and Sekoto became well known as a Jazz musician. In 1966 he visited Senegal for a year. Sekoto's paintings became political in the 1970s. In 1989 the Johannesburg Art Gallery honoured him with a retrospective exhibition and the University of the Witwatersrand with an Honorary Doctorate.

Sekoto is recognized as the pioneer of urban black art and social realism. He broke the convention of 'native' studies that had preceded his work. He used strong bright colours and unusual perspectives to convey the lively vitality and spontaneity of urban street life despite the hardship of life in Sophiatown and District Six. His work is highly sought after by collectors. His work is present in the Durban Art Gallery, Johannesburg Art Gallery, Pretoria Art Museum, South African National Gallery (Cape Town), Fort Hare and William Humphreys Art Gallery.

When you draw, you should use the principles of design, but not blindly follow the rules. Things have changed and modern artists deliberately *distort* perspective to change the space of their paintings. Some even deny the rules or ignore the rules completely. There are many ways to draw and it is impossible to say that one way is better than another. Refer back to the drawing by Picasso.

The skeleton is the framework of the human figure. The muscles and fat give shape to the figure. The skin adds folds and creases. All human beings are not the same, but it is useful to understand the basic proportions of the human figure before you begin to study it in more detail. We use the head as a measure. The body can be divided into 8 sections the size of the head.



ACTIVITY 1: INFORMAL ASSESSMENT

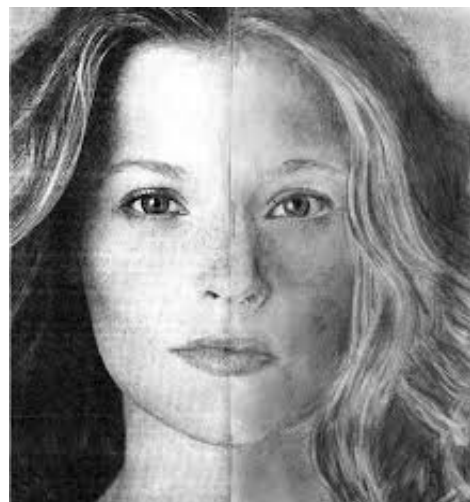
Choose a picture of a celebrity. Cut this picture in half and paste one half onto an A3 page after the necessary preparation. Redraw the second half of the celebrity's face on the A3 paper.

- Use A3 paper
- Draw a 2cm border around the paper
- Draw a LIGHT grid over the paper, with lines 5cm apart
- Cut the portrait in half lengthwise and paste one half onto the grid in the middle. Paste the second half into your Art book.
- Use pencils to sketch the second half of the portrait to complete the picture
- Remember to use all the Art Elements to further complete and colour the work i.e. Tone, Texture, Colour, etc.

You will be marked as follows:

- 5 marks for a well-proportioned portrait
- 5 marks for use of tone with pencil
- 5 marks for colour and texture as used in picture
- 5 marks for confident use of materials

TOTAL: 20 marks



RUBRIC FOR DRAWING					
CRITERIA	5 Outstanding achievement	4 Substantial achievement	3 Moderate achievement	2 Elementary achievement	1 Not achieved
Well- proportioned portrait	Well-drawn and proportioned picture	Drawing well proportioned, but some errors in neatness noted	Adequately drawn, but errors in proportion	Adequately drawn, but proportion is off	Poorly drawn
Tone	Pencil work neatly done and tone achieved with clear shading	Pencil work done neatly, but tonal work not clearly achieved	Adequate pencil drawing, but tonal work not clearly achieved	Good drawing, but tonal work lacking	Pencil drawing poor with no tonal work
Colour and texture	Picture well coloured and textured according to original	Errors noted in colouring, but texturing well tried	Colouring in is adequate, but texturing is poor	Colouring in is poor, with poor texturing as well	Colour does not match original picture and texture has not been achieved
Confident use of materials	Second half clearly matches original	Second half does not quite match	Errors noted in use of materials, with hesitant appearance	Adequate work, but appearance appears hesitant	Hesitation in execution
TOTAL: 20 marks					